

# CHEFSWEAR

APRONS | JACKETS & TEES | TROUSERS | ACCESSORIES



## THE CHEF'S CHOICE

The preparation, cooking and service of food is as essential as it's ever been with many venues expanding their offering to include take-out and delivery so we can enjoy our favourite dishes in the comfort of our own homes. Behind these dishes lies a team of talented chefs who all deserve a uniform that identifies them in this important role.

Busy commercial kitchens have a mix of important team members, from chefs at the top of their game to kitchen porters - they all need a uniform that is appropriate for the demands of the role. Durable, high wash chef's jackets are complemented by easy-wearing comfortable trousers and look to our aprons and waterproof solutions for added protection against the elements in the kitchen.



**PR856** - SHORT SLEEVE CHEF'S JACKET - PAGE 9

**PR126** - JEAN STITCH DENIM BIB APRON - PAGE 31

**PR555** - CHEF'S 'ESSENTIAL' CARGO POCKET TROUSER - PAGE 20

**PR906** - CHEF'S ZIP-CLOSE SHORT SLEEVE JACKET - PAGE 5

**PR150** - 'COLOURS COLLECTION' BIB APRON - PAGE 29

**PR556** - CHEF'S 'ARTISAN' JOGGER BOTTOMS - PAGE 21

**PR649** - CHEF'S COOLCHECKER® T-SHIRT - PAGE 19

**PR110** - STRIPED BIB APRON - PAGE 32

**PR553** - 'ESSENTIAL' CHEF'S TROUSER - PAGE 22

## CONTENTS

<b>Chef's Jackets</b>	4 - 17
<b>Face Coverings</b>	23 - 25
<b>Chef's Tees &amp; Polo Shirts</b>	18 - 19
<b>Chef's Trousers</b>	20 - 22
<b>Chef's Accessories</b>	26 - 27
<b>Chef's Aprons</b>	28 - 33
<b>Waterproofs</b>	34 - 35

## PEOPLE, PRODUCTION & THE PLANET

We are proud of our collection and the people who make it for us. We care about the environment that we all live and work in.

To protect what is important to us, we require every supplier and factory to meet a set of internationally recognised directives that awards them with a Certification of Compliance.





# ZIPPED CHEF'S JACKETS

PR906

## CHEF'S ZIP-CLOSE SHORT SLEEVE JACKET

- Zip through fastening
- Double pen pocket on left sleeve
- Colour contrast underarm
- Mandarin collar

### FABRIC

White: 65% Polyester, 35% Cotton  
Denim: 60% Cotton, 40% Polyester  
Weight: 170gsm/230gsm Denim

### SIZES

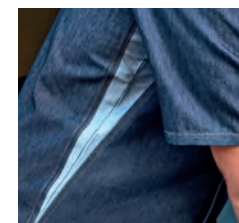
XS/30" – 2XL/50"

### COLOUR

3 as listed



**EASY  
CARE**



Colour contrast underarm



Zip through fastening



Loop for hanging



WHITE

INDIGO DENIM

BLACK DENIM

PR906



# 'ESSENTIAL' CHEF'S JACKETS

**PR900**

## 'ESSENTIAL' SHORT SLEEVE CHEF'S JACKET

- Five button wrap over fastening
- Long life resin buttons
- Double pen pocket on left sleeve
- Mandarin collar

### FABRIC

65% Polyester, 35% Cotton  
Weight: 170gsm

### SIZES

XS/30" – 4XL/58"

### COLOUR

2 as listed

**PR901**

## 'ESSENTIAL' LONG SLEEVE CHEF'S JACKET

- Five button wrap over fastening
- Long life resin buttons
- Double pen pocket on left sleeve
- Mandarin collar

### FABRIC

65% Polyester, 35% Cotton  
Weight: 170gsm

### SIZES

XS/30" – 4XL/58"

### COLOUR

2 as listed



**EASY  
CARE**



Long life  
resin buttons



BLACK

WHITE



BLACK

WHITE



PR901

PR900



# CLASSIC CHEF'S JACKETS

PR656

PR657

PR657

## LONG SLEEVE CHEF'S JACKET

- Ten button hole wrap over fastening
- Double pen pocket on left sleeve
- Mandarin collar

### FABRIC

65% Polyester, 35% Cotton  
Weight: 195gsm

### SIZES

XS/30" – 4XL/58"

### COLOUR

3 as listed

PR656

## SHORT SLEEVE CHEF'S JACKET

- Ten button hole wrap over fastening
- Double pen pocket on left sleeve
- Mandarin collar

### FABRIC

65% Polyester, 35% Cotton  
Weight: 195gsm

### SIZES

XS/30" – 4XL/58"

### COLOUR

3 as listed



**EASY  
CARE**







PR670

## WOMEN'S STYLES

**PR670**

### SHORT SLEEVE CHEF'S JACKET

**PR671**

### LONG SLEEVE CHEF'S JACKET

- Ten button hole wrap over fastening
- Double pen pocket on left sleeve
- Back panels for a more fitted style

#### FABRIC

65% Polyester, 35% Cotton  
Weight: 195gsm

#### SIZES

8/XS - 18/2XL

#### COLOUR

1 as listed



WHITE

WHITE



PR671



NEW

PR902

**COOL**<sup>®</sup>  
CHECKER

# COOLCHECKER<sup>®</sup> CHEF'S JACKETS

PR902

CHEF'S SHORT SLEEVE  
COOLCHECKER<sup>®</sup> JACKET

PR903

CHEF'S LONG SLEEVE  
COOLCHECKER<sup>®</sup> JACKET

- Coolchecker<sup>®</sup> back panel
- Double pen pocket on left sleeve
- Self-fabric ten button fastening

## FABRIC

65% Polyester, 35% Cotton  
Weight: 170gsm

## SIZES

XS/30" – 2XL/50"

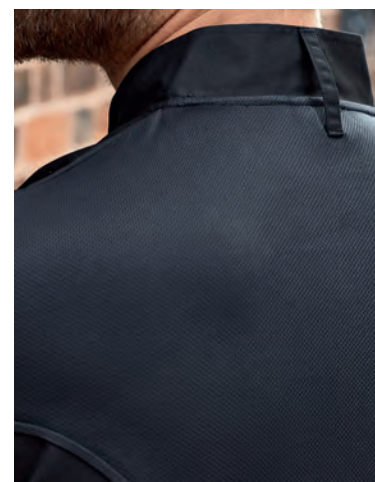
## COLOUR

2 as listed



EASY  
CARE

PR903



Coolchecker<sup>®</sup> fabric back panel and loop for hanging



WHITE

BLACK



# PRESS-STUD FASTENING

**PR664**

SHORT SLEEVE STUDED  
FRONT CHEF'S JACKET

**PR665**

LONG SLEEVE STUDED  
FRONT CHEF'S JACKET

- Mandarin collar
- Ten press-stud fastening
- Wrap over style

**FABRIC**

65% Polyester, 35% Cotton  
Weight: 195gsm

**SIZES**

XS/30" – 3XL/54"

**COLOUR**

2 as listed



BLACK

WHITE



BLACK

WHITE



**EASY  
CARE**



PR664

PR665



PR660



# DENIM

## CHEF'S JACKET

PR660

### DENIM CHEF'S JACKET

- Cotton rich chef's jacket
- Cross-over front fastening
- Ten press-stud fastening

#### FABRIC

60% Cotton, 40% Polyester  
Weight: 230gsm

#### SIZES

XS/30" – 3XL/54"

#### COLOUR

2 as listed



BLACK DENIM

GREY DENIM



# 'CUISINE'

## CHEF'S JACKET

PR661

### LONG SLEEVE 'CUISINE' CHEF'S JACKET

- Mandarin collar
- Comes with Black removable studs [other colours available, see page 27]
- Ten hole wrap over fastening

#### FABRIC

65% Polyester, 35% Cotton  
Weight: 195gsm

#### SIZES

XS/30" – 4XL/58"

#### COLOUR

2 as listed



WHITE

BLACK



PR661







## POLO SHIRTS

PR610

### STUDDED POLO

- Three pop stud placket
- Extra body length
- Durable pique knit

#### FABRIC

65% Polyester,  
35% Cotton, 200gsm

#### SIZES

S/34" – 3XL/52"

#### COLOUR

4 as listed



PR995

### UNISEX SHORT SLEEVE POLO SHIRT

- Powered by HeiQ Viroblock, an antimicrobial textile technology designed to kill microbes, germs and bacteria on the fabric surface
- Ribbed knit collar and sleeve cuff
- Two button placket
- Extra body length

#### FABRIC

65% Polyester, 35% Cotton,  
powered by HeiQ Viroblock,  
200gsm

#### SIZES

S/35" – 4XL/53"

#### COLOUR

5 as listed



## CHEF'S T-SHIRT

PR649

### CHEF'S COOLCHECKER® T-SHIRT

- Crew neck styling
- Coolchecker® fabric back panel
- Underarm vent holes
- Pen pocket on left sleeve

#### FABRIC

100% Polyester  
Weight: 135gsm

#### SIZES

XS/30" – 3XL/54"

#### COLOUR

2 as listed



Underarm vent holes







**PR555**

## CHEF'S 'ESSENTIAL' CARGO POCKET TROUSER

- Two mobile friendly cargo pockets
- Elasticated waistband
- Draw cord

### FABRIC

65% Polyester, 35% Cotton  
Weight: 195gsm

### SIZES

XS/28" – 3XL/46"

### COLOUR

Black



Draw cord waist



**EASY  
CARE**



INDIGO DENIM

# CHEF'S TROUSERS

**PR556**

## CHEF'S 'ARTISAN' JOGGER BOTTOMS

- Cuffed ankle
- Elasticated waistband, draw cord and belt loops
- Soft and stretchy fabric

### FABRIC

87% Cotton, 12% Polyester,  
1% Elastane, Weight: 230gsm

### SIZES

XS/28" – 2XL/44"

### COLOUR

2 as listed



BLACK DENIM



**COTTON  
RICH**



# CHEF'S TROUSERS



BLACK



BLACK & WHITE CHECK

NAVY & WHITE CHECK



BLACK

BLACK & WHITE CHECK

PR554

## CHEF'S 'SELECT' SLIM LEG TROUSER

- Fitted style on lower leg
- Patch pocket on right leg
- Elasticated waist with draw cord and zip fly fastening

### FABRIC

65% Polyester, 35% Cotton  
Weight: 195gsm

### SIZES

XS/28" – 2XL/44"

### COLOUR

1 as listed

PR552

## PULL ON CHEF'S TROUSER

- Elasticated waist
- Zip fly
- 77cm/30.5" inside leg

### FABRIC

65% Polyester, 35% Cotton  
Weight: 195gsm

### SIZES

XS/28" – 2XL/44"

### COLOUR

2 as listed

PR553

## 'ESSENTIAL' CHEF'S TROUSER

- Elasticated waist
- Swing pockets
- 77cm/30.5" inside leg

### FABRIC

65% Polyester, 35% Cotton  
Weight: 195gsm

### SIZES

XS/28" – \*4XL/48"  
\*only available in Black

### COLOUR

2 as listed

# MASKS & ACCESSORIES

PR796

## 3 LAYER FABRIC MASK

- Three layer fabric mask with a middle filtering layer
  - High air permeability for ease of breathing
  - Elasticated ear loops with adjustable drawstring cord to fit securely in place
  - Bendy nose wire to prevent glasses steaming up
  - Optional pocket for carbon filter (PR797 sold separately)
  - Snug fit over nose and chin
  - Comes in a resealable retail friendly bag
- \*AFNOR SPEC S76-001 – Eurofins Test CH\_PCL\_1 Class 1.

### FABRIC

Outer layer: 100% Woven cotton, Mid layer: Filtering non-woven polyester, Inner layer: Soft feel 100% woven cotton

### COLOUR

12 colours



BLACK



NAVY



INDIGO



ROYAL



RED



BURGUNDY



BOTTLE



NATURAL



KHAKI



DARK GREY



SILVER



WHITE

PR797

## PM2.5 ACTIVATED CARBON MASK FILTER

- Optional filter for PR796 for additional defence
- Spunbond cloth filters micron-level dust
- PM2.5 (Particulate matter 2.5 microns)
- Conforms to standards GB2626-2006
- Reduces inhalation of particles such as haze, dust, pollen and motor vehicle exhaust emissions



REPLACE EVERY 1 TO 3 DAYS

PR797

PACK OF 10

Filter can fit into the pocket of the PR796 3 Layer Face Mask

12

Colours



FILTERS 98% OF PARTICLES\*

\*Please read disclaimer on page 25



15

Colours



FILTERS 87% OF PARTICLES\*

silvadur  
The Science of Cleanliness

# WASHABLE & RESUSABLE

PR799

## WASHABLE FACE COVERING

PACK OF 5

- Washable and reusable
- Two layers of single jersey fabric with inner loop option for fit adjustment
- Silvadur™ 930 Antimicrobial finish on inner layer
- Zelan™ R3 / Teflon EcoElite™ water repellent finish on outer layer
- L 32 x W 12cm
- Snug fit over nose and chin
- Comes in a resealable retail friendly bag
- AFNOR SPEC S76-001 – Eurofins Test CH\_PCL\_2 Class 1.

### FABRIC

95% Cotton, 5% Elastane, 160gsm

### COLOUR

15 colours



\*Please read disclaimer on page 25

# 3 LAYER FACE MASK

POWERED BY, HEIQ VIROBLOCK\*

PR994

## 3 LAYER FACE MASK

- HeiQ Viroblock antimicrobial textile technology applied to the inner layer; designed to kill microbes, germs and bacteria on the fabric surface
- Three layers with a middle filtering layer with pocket for inserting optional PR797 carbon filter (see page 23)
- Elasticated ear loops and drawcord to fit securely in place
- Teflon™ water repellent outer layer to repel droplets landing on the mask surface

### FABRIC

Outer layer: 65% Polyester, 35% Cotton, Mid layer: 100% Polyester non-woven, Inner layer: 100% Cotton jersey, powered by HeiQ Viroblock

### COLOUR

5 colours



**FACE COVERINGS DISCLAIMER:** Premier Face Coverings, PR796 and PR799 are designed to aid defence against the spread of infection. We make no assurances that they can prevent transmission or infection of disease or viruses. They are not medical or clinical face masks and as such should not be used for this purpose. They should not be used in areas where infection level is high and in any exposure to high level heat sources or combustible substances. Remove and do not use then masks if you are suffering breathing difficulties or skin irritation. It is recommended that you wash these products before use.

**HEIQ VIROBLOCK DISCLAIMER:** The following products have been treated with a biocide to protect them from spoilage by microbes and germs. Active ingredient: silver chloride. PR994, PR995, PR996 and PR998 are powered by HeiQ Viroblock (technology) and are designed to aid defence against the spread of infection. Premier makes no assurances that they can prevent transmission or infection of disease or viruses. They are not medical or clinical garments and as such should not be used for this purpose. They should not be used under any circumstances where infection level is high and in any exposure to high level heat sources or combustible substances. Remove and do not wear these garments if you are suffering with breathing difficulties or skin irritation. It is recommended that you wash these products before use.



# CHEF'S ACCESSORIES

PR653

PR653

## CHEF'S SKULL CAP

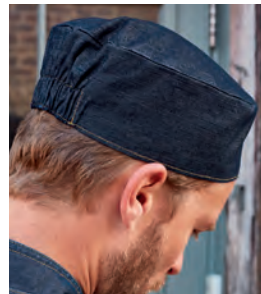
- Flat top
- Elasticated back
- One size fits all

### FABRIC

Colours: 65% Polyester, 35% Cotton, 195gsm  
Denim: 60% Cotton, 40% Polyester, 230gsm

### COLOUR

9 as listed



Elasticated back



PR648

PR648

## TURN UP CHEF'S HAT

- Turn up double edge band
- Five eyelets for ventilation
- Four sizes available

### FABRIC

65% Polyester, 35% Cotton.  
Weight: 195gsm

### SIZES

S 54cm, M 57cm, L 60cm, XL 63cm

### COLOUR

2 as listed



PR658

## CHEF'S ZANDANA

- Two ties at the back
- Elasticated back
- Neck flap

### FABRIC

65% Polyester, 35% Cotton.  
Weight: 195gsm

### COLOUR

2 as listed



PR658



PR652

PR652

## CHEF'S JACKET STUDS

- Removable studs
- For use with PR661 Cuisine Jacket (pg 17)
- Sold in bags of 12

### FABRIC

Durable plastic

### COLOUR

3 as listed





60

Colours



PR150

85

# 'COLOURS COLLECTION' BIB APRON

**PR150**

- Adjustable buckle on neckband
- Self-fabric ties
- Two sizes available

**FABRIC**

Colours: 65% Polyester, 35% Cotton, 195gsm  
Denim: 70% Cotton, 30% Polyester, 265gsm

**SIZES**

Standard size: 86cm x 72cm

\*Extra large size: 102cm x 91cm Black and White only

 CORNFLOWER	 ROYAL	 MARINE BLUE	 NAVY	 INDIGO DENIM	 BLUE DENIM
 CYAN	 LIGHT BLUE	 PEACOCK	 MID BLUE	 SAPPHIRE	 LILAC
 LAVENDER	 PURPLE	 RICH VIOLET	 AUBERGINE	 FUCHSIA	 MAGENTA
 PINK	 HOT PINK	 RASPBERRY CRUSH	 BURGUNDY	 RED	 SALSA
 STRAWBERRY RED	 ORANGE	 TERRACOTTA	 CHESTNUT	 BROWN	 MOCHA
 MUSHROOM	 LATTE	 KHAKI	 NATURAL	 CAMEL	 MUSTARD
 SUNFLOWER	 YELLOW	 LEMON	 LIME	 OASIS GREEN	 OLIVE
 AQUA	 DUCK EGG BLUE	 TURQUOISE	 TEAL	 EMERALD	 KELLY
 PISTACHIO	 APPLE	 BOTTLE	 SAGE	 WHITE*	 BLACK DENIM
 GREY DENIM	 SILVER	 STEEL	 CHARCOAL	 DARK GREY	 BLACK*



# BIB APRON

POWERED BY,  
HEIQ VIROBLOCK\*



PR996

NEW

HEIQ  
VIROBLOCK

Powered by HeiQ Viroblock, a world-leading innovative Swiss textile technology.



PR996

## BIB APRON

- Powered by HeiQ Viroblock, an antimicrobial textile technology designed to kill microbes, germs and bacteria on the fabric surface
- Buckle on the neckband for height adjustment
- 86cm long x 72cm wide
- Self fabric ties

### FABRIC

65% Polyester, 35% Cotton, powered by HeiQ Viroblock, 195gsm

### COLOUR

5 colours



# JEAN STITCH DENIM APRON

PR126

## JEAN STITCH DENIM BIB APRON

- Four 'kangaroo' style pockets with rivet detail
- Adjustable buckle on neck band
- Width 72cm, length 86cm

### FABRIC

70% Cotton, 30% Polyester  
Weight: 265gsm

### COLOUR

2 colours



PR126





PR110

**PREMIER**  
UNIFORMS THAT WORK FOR YOU

PR110

## STRIPED BIB APRON

- Butcher's style apron
- 90cm self-fabric ties and neck band
- Width 72cm, length 101cm

### FABRIC

Navy/White & Black/White: 100% Cotton, 240gsm  
Black/Grey: 65% Polyester, 35% Cotton, 195gsm

### COLOUR

3 as listed



BLACK/WHITE†

BLACK/GREY

NAVY/WHITE†

# ORGANIC CERTIFIED COTTON

PR102

## 100% COTTON APRON - ORGANIC CERTIFIED

- Self-fabric ties
- Self-fabric neckband
- Width 60cm, length 87cm

### FABRIC

100% Cotton - Organic Certified, 240gsm

### COLOUR

20 as listed



20

Colours

PR102



**CERTIFIED  
ORGANIC  
COTTON**



# WATERPROOF IN THE KITCHEN

PR118

## ALL PURPOSE WATERPROOF GOWN

- Waterproof and bleach resistant
- Adjustable tear release fastening
- Elasticated cuffs
- Two side pockets
- Shaped fit to the body

### FABRIC

100% Polyester with Polyurethane coating, 110gsm

**COLOUR** 3 colours  
**SIZES** S/M, L/XL



PR118



Back detail



BLEACH RESISTANT

PR115

## WATERPROOF BIB APRON

- Waterproof and bleach resistant
- Adjustable buckle on neckband
- 90cm self fabric ties

### FABRIC

100% Polyester with Polyurethane coating, 110gsm

**COLOUR** 8 colours



BLEACH RESISTANT



2 NEW COLOURS



PR115





**JACKETS  
T-SHIRTS  
TROUSERS  
ACCESSORIES  
APRONS**